

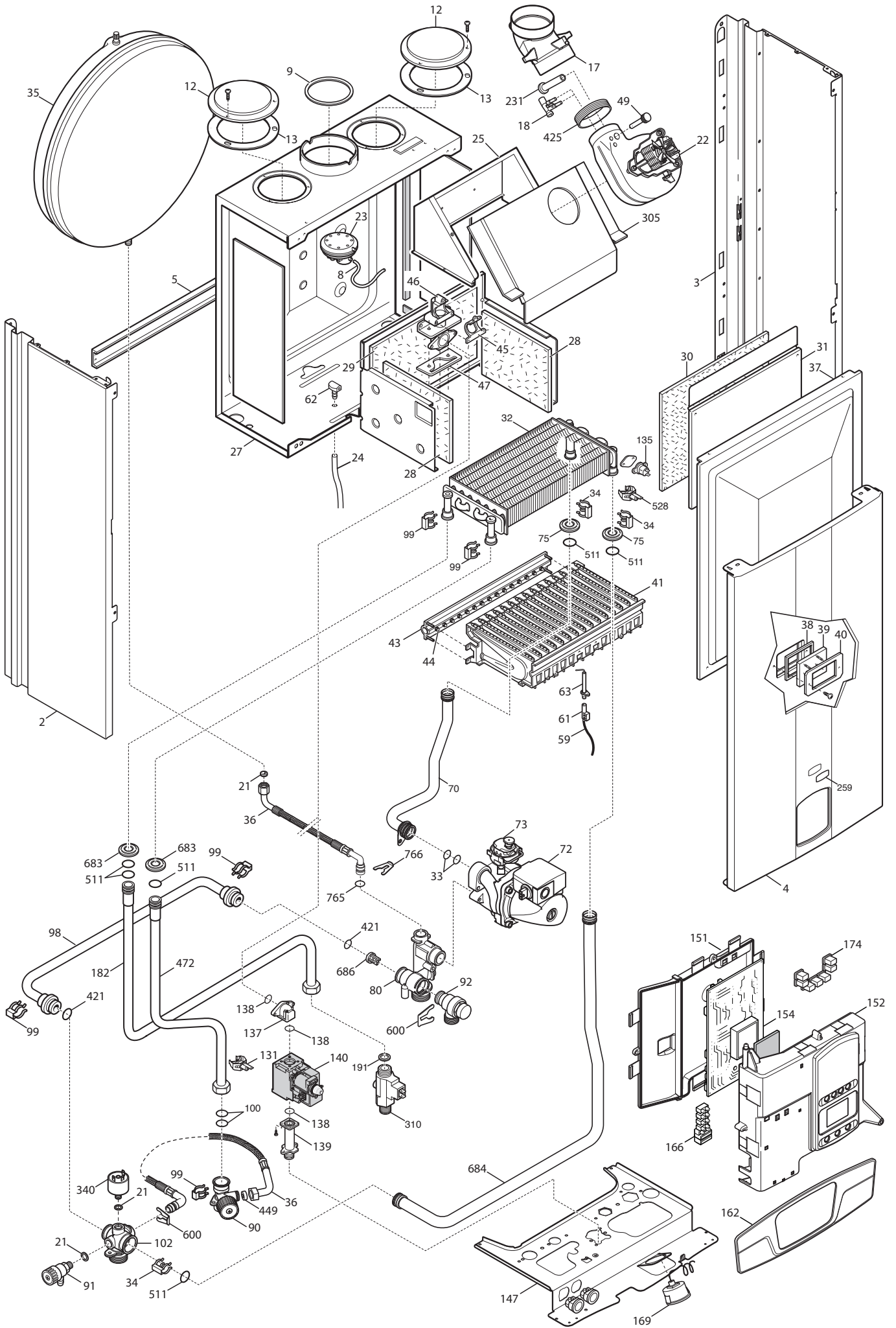
WESTEN

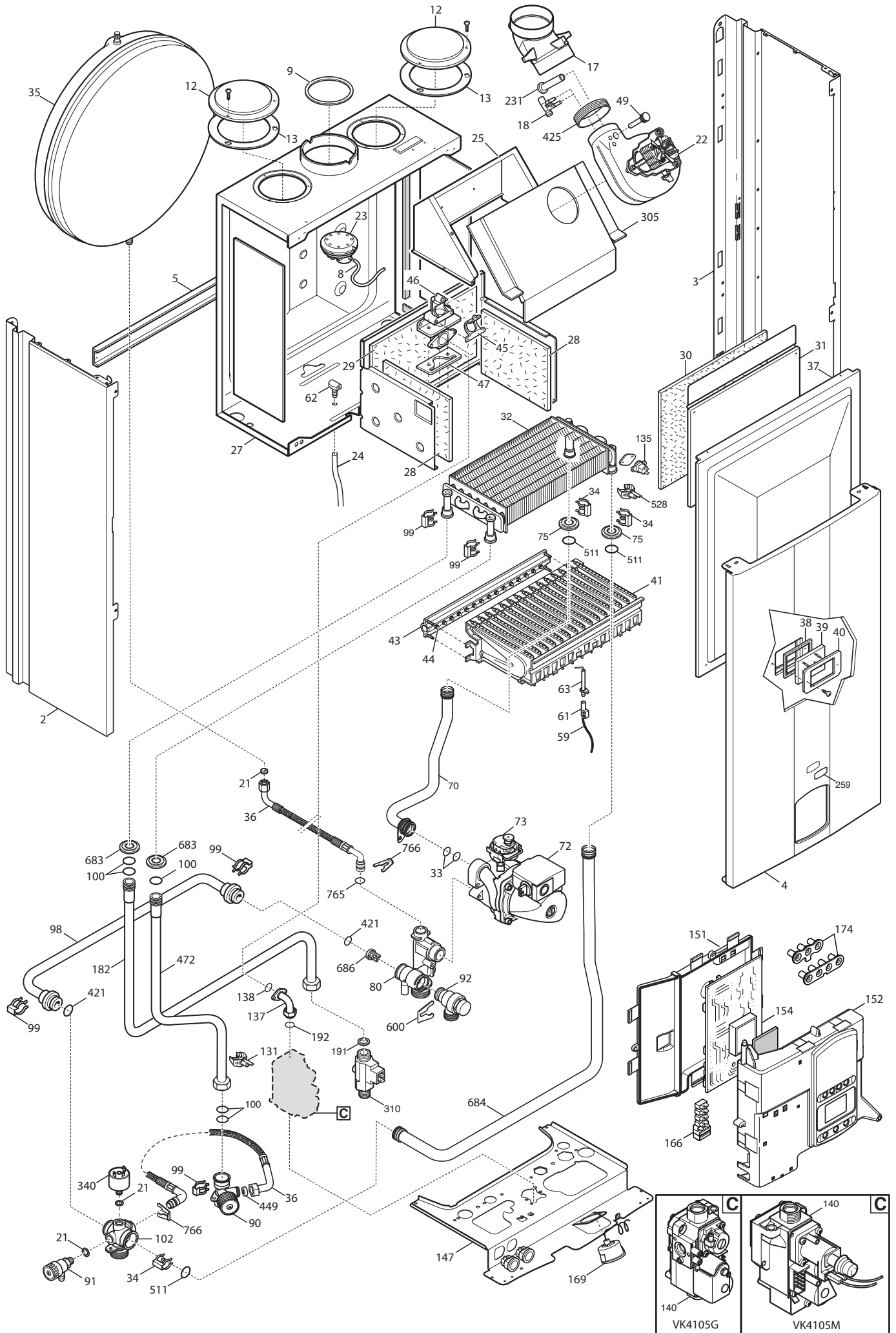
The smart choice for your home comfort

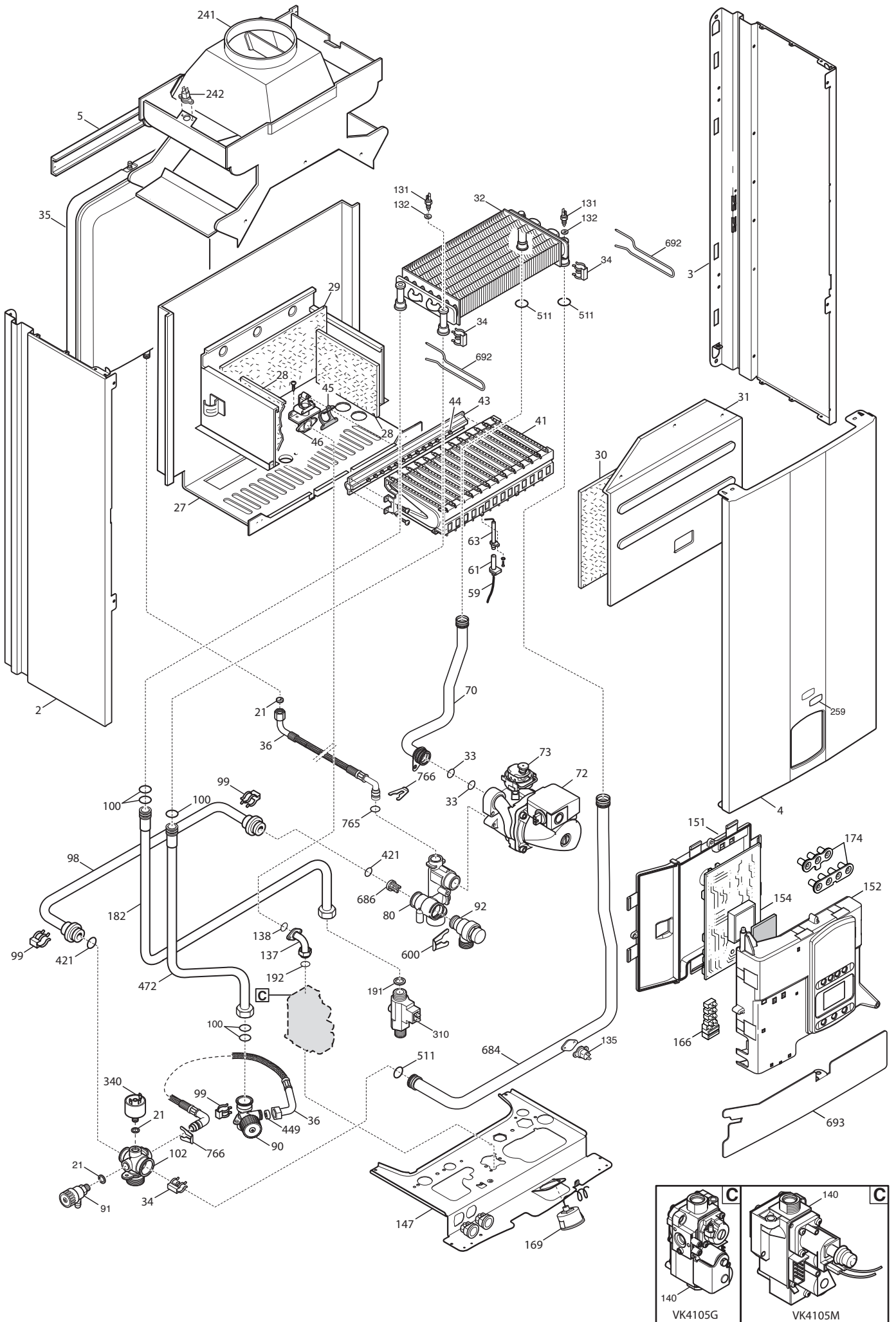


quasar D SPARE PARTS CATALOGUE - January 2015 -

BOILER CODE	BOILER DESCRIPTION	EXPLODED REF.
CODICE CALDAIA	DESCRIZIONE CALDAIA	RIF. ESPLOSO
CODIGO CALDERA	DESCRIPCION CALDERA	REF. EXPLOSIONADO
CODE CHAUDIÈRE	DESCRIPTION CHAUDIÈRE	RÉF. EXPLOSÉE
BYH442243972	QUASAR D 24	Tab 396
BYH442243971	QUASAR D 24	Tab 396
BYH442243970	QUASAR D 24	Tab 378
BYH446243972	QUASAR D 24F	Tab 395
BYH446243971	QUASAR D 24F	Tab 395
BYH446243970	QUASAR D 24F	Tab 377







Pos	Code	Description code	BYH44243970 24	BYH44243971 24	BYH44243972 24	24 F	BYH44243970 24 F	BYH44243971 24 F	BYH44243972 24 F	To serial number	From serial number	Intercha ngeable:
35	5693920	CIRC.EXPANS.VESSEL 6I CIMM							•			
35	5693920	CIRC.EXPANS.VESSEL 6I CIMM				•	•					YES
35	5695230	CIRC.EXPANS.VESSEL 6I ZILMET				•	•			C012		
36	5698830	PIPE EXPANSION VESSEL	•	•	•	•	•	•				
37	5663830	SEALED CHAMBER FRONT PANEL				•	•	•				
38	5401610	VIEWING WINDOW GASKET				•	•	•				
39	5203930	VIEWING WINDOW				•	•	•				
40	5115590	SURROUND-SIGHT GLASS				•	•	•				
41	5663710	BURNER ASSEMBLY (13 ELEM.)	•	•	•							
41	5700530	BURNER ASSEMBLY 11 ELEMENTS				•	•	•				
43	5698690	GAS RAMP 13HOLES/INJECT. d1,18	•	•	•							
43	5700500	GAS RAMP 11 HOLES/INJECT d.1,35				•	•	•				
44	5666390	L.P.G. INJECTORS KIT	•	•	•							
44	5669460	NATURAL GAS INJECTORS KIT	•	•	•							
44	5704730	KIT TRANSF.GAS G31 11x0,85				•	•	•				
44	5705280	KIT TRANSF.GAS G20 11x1,35				•	•					
45	5407940	GASKET-BURNER MANIFOLD	•	•	•	•	•	•				
46	5657180	ADAPTOR-MANIFOLD	•	•	•	•	•	•				
47	5407810	GASKET-MANIFOLD ADAPTOR				•	•	•				
49	5409520	HOSE ADAPTER CAP				•	•	•				
59	8612400	IGNITION CABLE L=250 ECO4	•	•		•	•			C112		
59	710430800	IGNITION CABLE L=250 RESIST.	•	•		•	•					YES
59	710430800	IGNITION CABLE L=250 RESIST.			•			•				
61	5407830	INSULATION BOOT - ELECTRODE	•	•	•	•	•	•				
62	5409570	SEALED CHAMBER HOSE ADAPTER				•	•	•				
63	8422570	ELECTRODE - IGNITION	•	•	•	•	•	•				
70	5700340	ASS.PIPE PUMP/EXCHANGER	•	•	•							
70	5700550	PIPE ASS.PUMP/EXCH.MAIN4 FF225				•	•	•		1438		
70	711216000	PIPE ASS.PUMP/EXCH.MAIN4 FF225				•	•	•			1439	YES
72	5698260	PUMP ONE SPEED 5meters WILO	•	•	•	•	•	•				
73	710139500	AUTOMATIC AIR VENT	•	•	•	•	•	•				
75	5404670	GROMMET - PIPE ASSEMBLY				•	•	•				
80	5214590	HYDRAULIC INLET GROUP/PUMP	•	•	•	•	•	•				
90	5700370	CONNECTION CH OUTLET/FILLING	•	•		•	•			C007		
90	710224400	CONNECTION CH OUTLET/FILLING			•			•				
90	710224400	CONNECTION CH OUTLET/FILLING	•	•		•	•				C008	YES
91	5652030	DRAINING TAP	•	•	•	•	•	•				
92	710071200	SAFETY VALVE 3 bar NOVASFER	•	•	•	•	•	•				
98	5214610	BY-PASS PIPE MAIN 4	•	•	•	•	•	•				
99	8380850	FIXING CLIP	•	•	•	•	•	•				
100	5406630	O-RING	•	•	•	•	•	•		1321		
100	711296900	O-RING 13,94X2,62 TFL	•	•	•	•	•	•			1322	YES

Pos	Code	Description code	BYH44243970 24	BYH44243971 24	BYH44243972 24	BYH44243970 24 F	BYH44243971 24 F	BYH44243972 24 F					To serial number	From serial number	Intercha ngeable:
102	5214600	GROUP HEATING INLET MAIN 4	•	•	•	•	•	•							
131	8435400	NTC SENSOR	•	•	•										
131	8435510	NTC SENSOR d.14				•	•	•							
132	5402830	WASHER - SENSOR SEALING	•	•	•										
135	9950760	THERMOSTAT - LIMIT	•	•	•	•	•	•							
137	5214270	GAS V. ELBOW OUTLET OPEN FLUE	•												
137	5214280	GAS VALVE ELBOW OUTLET FF				•									
137	5702350	PIPE GAS MAIN 4 ATM		•	•										
137	5702360	PIPE GAS MAIN 4 FF					•	•							
138	5402010	O RING 22.22x2.62	•	•	•	•	•	•							
139	5206620	CONNECTOR-GAS VALVE INLET	•			•									
140	5653610	GAS VALVE - SIGMA 845048	•			•									
140	5665220	GAS VALVE HON.	•			•									
140	5702340	GAS VALVE VK4105G M-M G3/4		•			•								
140	710669200	GAS VALVE VK4105M M-M G3/4			•			•							
147	5693850	CONNECTION TRAVERSE ECO4	•	•	•	•	•	•							
151	631660	CONTROL PANEL ECO4	•		•	•		•						1224	
151	631670	CONTROL PANEL MAINFOUR (G)		•			•							1224	
151	5413650	CONTROL PANEL COVER ECO4	•		•	•		•				1223			
151	5414290	ELECTR.BOX REAR COVER MAINFOUR		•			•					1223			
152	5698980	PRINT.CONTR.PANEL ECO4 WESTEN	•	•	•	•	•	•							
154	5702470	PCB GROUP HONEYWELL SM11460	•			•						1235			
154	5705240	PCB GROUP HONEYWELL SM11463		•			•					C107			
154	710591400	PCB HONEYWELL SM11463		•									C108	YES	
154	710648100	PCB HONEYWELL SM11465					•						C108	YES	
154	710825400	PCB SM11470			•			•							
154	710825400	PCB SM11470	•			•							1303	YES	
154	711048700	PCB SM11470	•			•						1302			
166	5688430	TERM.BOARD/DOUBLE FUSE HOLDER	•	•	•	•	•	•							
169	8922460	MANOMETER d.40 XGR. BITRON	•	•	•	•	•	•							
174	628840	KEYBOARD 3 AND 4 BUTTONS	•	•	•	•	•	•							
182	5701380	WATER INPUT PIPE MAIN 4	•	•	•										
182	5701390	WATER INPUT PIPE MAIN 4 FF 225				•	•	•							
191	5408970	WASHER - SEALING G1/2	•	•	•	•	•	•							
192	5404650	SEALING WASHER G 3/4		•	•		•	•							
231	5409480	FLUE INTAKE				•	•	•							
241	5668420	CONVEYOR ASSEMBLY	•	•	•										
242	616160	FLUE SAFETY THERMOSTAT 70ø	•	•	•										
259	5700470	BRAND QUASAR D WESTEN	•	•		•	•								
259	710771400	BRAND QUASAR D WESTEN			•			•							
305	5118160	FAN BRACKET 225				•	•	•							
310	5667220	FLOW SWITCH BITRON	•	•	•	•	•	•							

Pos	Code	Description code	BYH44243970	BYH44243971	BYH44243972	BYH44243970	BYH44243971	BYH44243972	To serial number	From serial number	Interchangeable:
			24	24	24	24 F	24 F	24 F			
310	710228100	FLOW SWITCH BITRON		•				•			
340	9951690	PRESSURE SWITCH	•	•	•	•	•	•			
421	5408270	O-RING 11,91 X 2,62 NBR	•	•	•	•	•	•			
425	5412270	GASKET FAN HT					•	•			
449	5640030	RETAINING VALVE	•	•	•	•	•	•			
472	5214580	DHW INLET PIPE MAIN4 OPEN FLUE	•	•	•						
472	5214670	DHW INLET PIPE MAIN 4 FF 225					•	•			
511	5404600	O.R. 17,86x2,62	•	•	•	•	•	•			
528	8435500	NTC SENSOR D18-ITS2410201/0-					•	•			
600	710045400	CLIP FLAT d.18	•	•	•	•	•	•			
683	5408810	GASKET GAS RAMP					•	•			
684	5214650	PIPE EXCH./HEAT.OUTLET FF 225					•	•	1438		
684	5700350	PIPE EXCHANGER/HEATING OUTLET	•	•	•						
684	711216100	PIPE EXCH./HEAT.OUTLET FF 225					•	•		1439	YES
686	5663020	BY-PASS PLUG ASSEMBLY	•	•	•	•	•	•			
692	5114360	PRIMARY EXCHANGER CLIPS	•	•	•						
693	5117440	PRINTED CNTR. PANEL PROTECTION	•	•	•						
765	710045700	O-RING d.9,19 X 2,62	•	•	•	•	•	•		1314	YES
765	710069700	O-RING 9,19X2,62 EPDM	•	•	•	•	•	•	1313		
766	5118110	FLAT SPRING diameter 10	•	•	•	•	•	•			
999	8414540	CABLE ROOM TH	•	•	•	•	•	•			
999	8414620	POWER CABLE	•	•	•	•	•	•			
999	8419040	CABLE - EARTH	•	•	•	•	•	•			
999	8513660	FAN WIRING ECO4					•	•			
999	8514030	HIGH VOLTAGE WIRING MAIN 4 SIT	•				•				
999	8514040	HIGH VOLT.WIRING MAIN4 HONEYW.	•		•	•		•			
999	8514050	LOW VOLT.WIRING 12P MAIN 4 ATM	•								
999	8514060	LOW VOLT.WIRING 6P.MAIN 4 ATM.	•								
999	8514070	LOW V.WIRING 12P. MAIN4 FF 225					•	•			
999	8514080	LOW VOLT.WIRING 6P.MAIN4 FF225					•	•			
999	8514130	LOW VOLT.WIRING 12P.MAINFOUR						•			
999	8514140	WIRING BT 6P. MAINFOUR						•			
999	8514150	HIGH VOLTAGE WIRING MAINFOUR		•				•			
999	8514160	GAS VALVE WIRING MAINFOUR		•				•			
999	8514170	LOW VOLT.WIRING 12P.MAINFOUR		•							
999	8514180	LOW VOLT.WIRING 6P.MAINFOUR		•							
999	710714500	LOW POWER CABLE 12PIN MAINFOUR			•						
999	710767000	LOW V. WIRING 6P. ATM			•						

