

BAXI

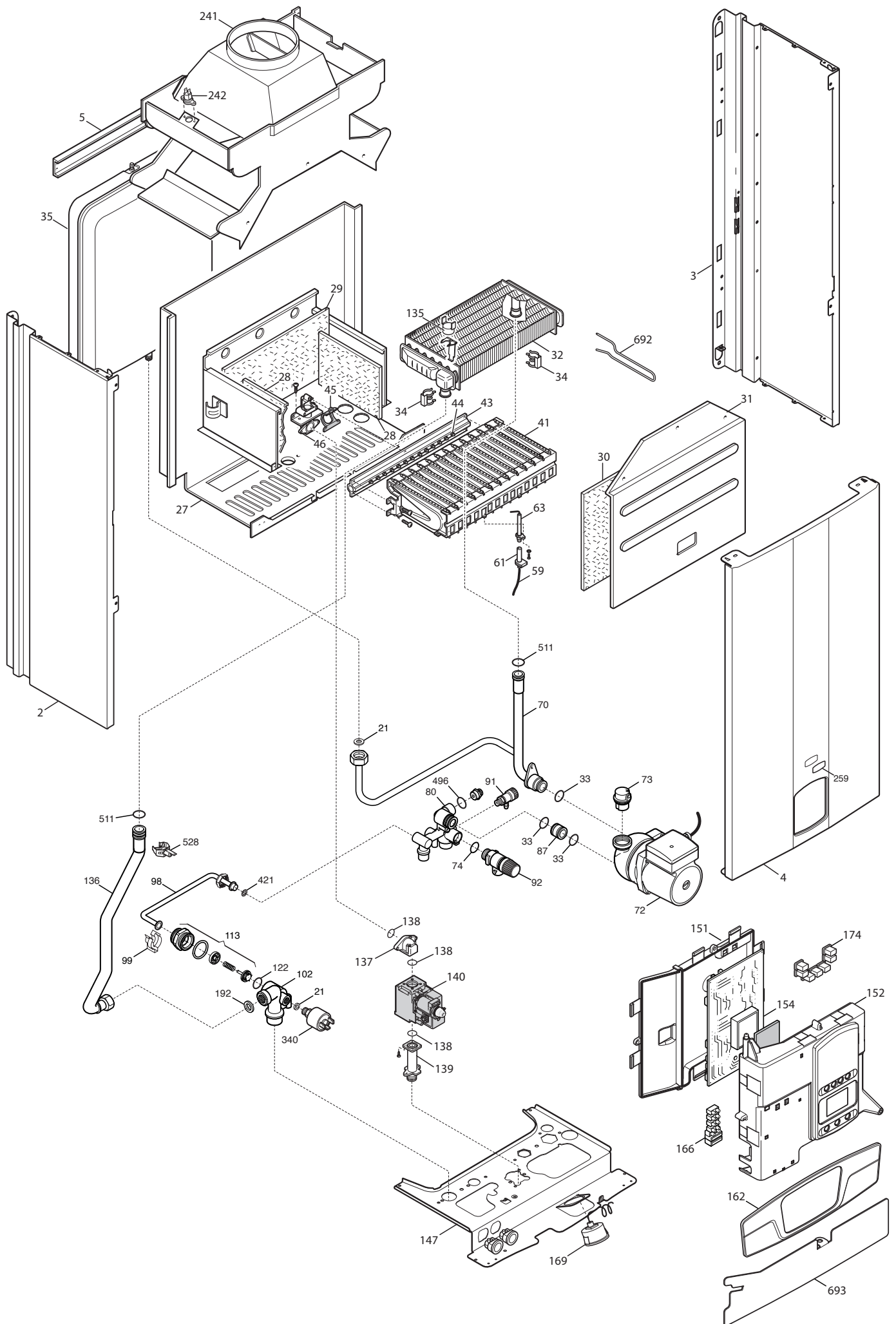


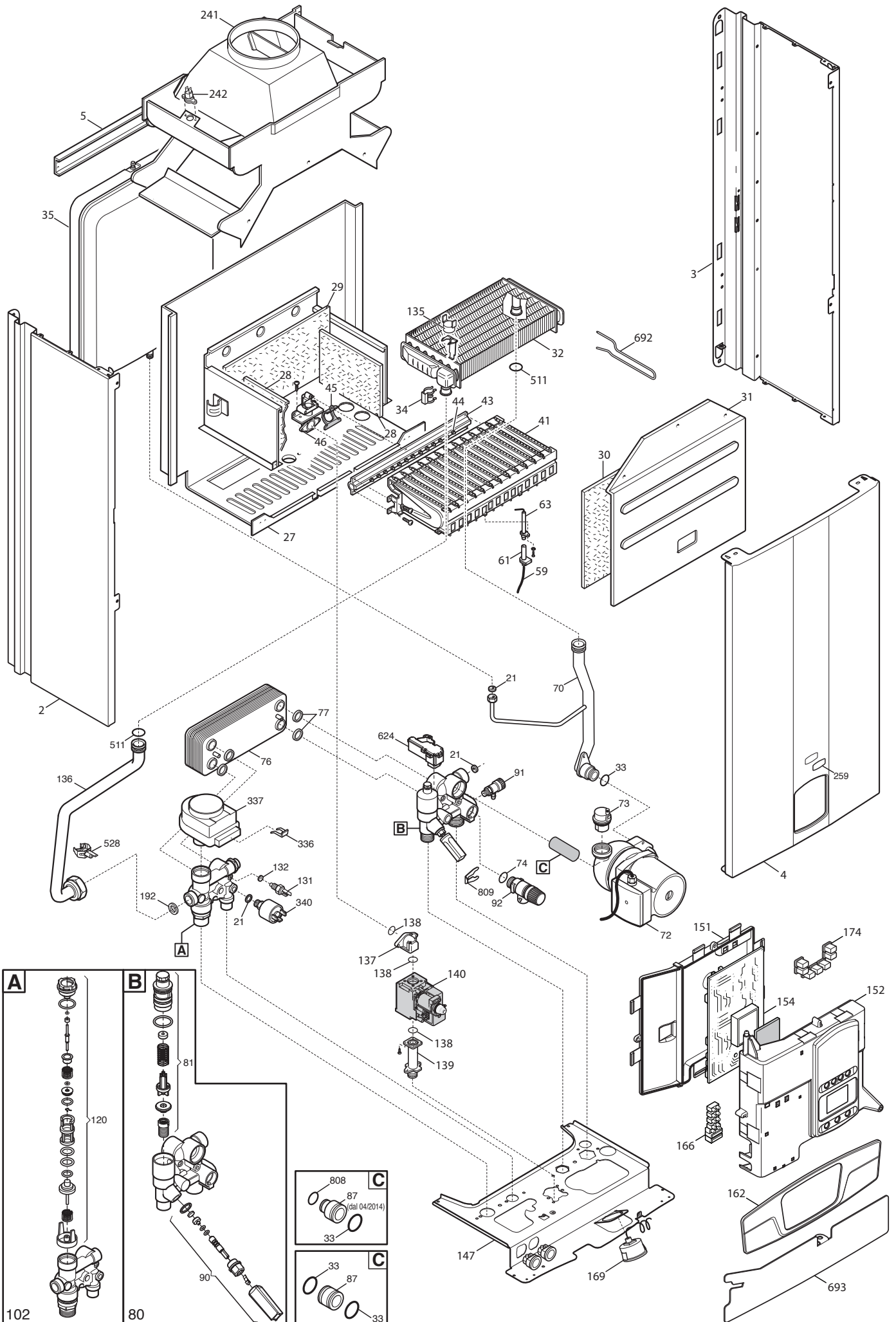
ECOFOUR

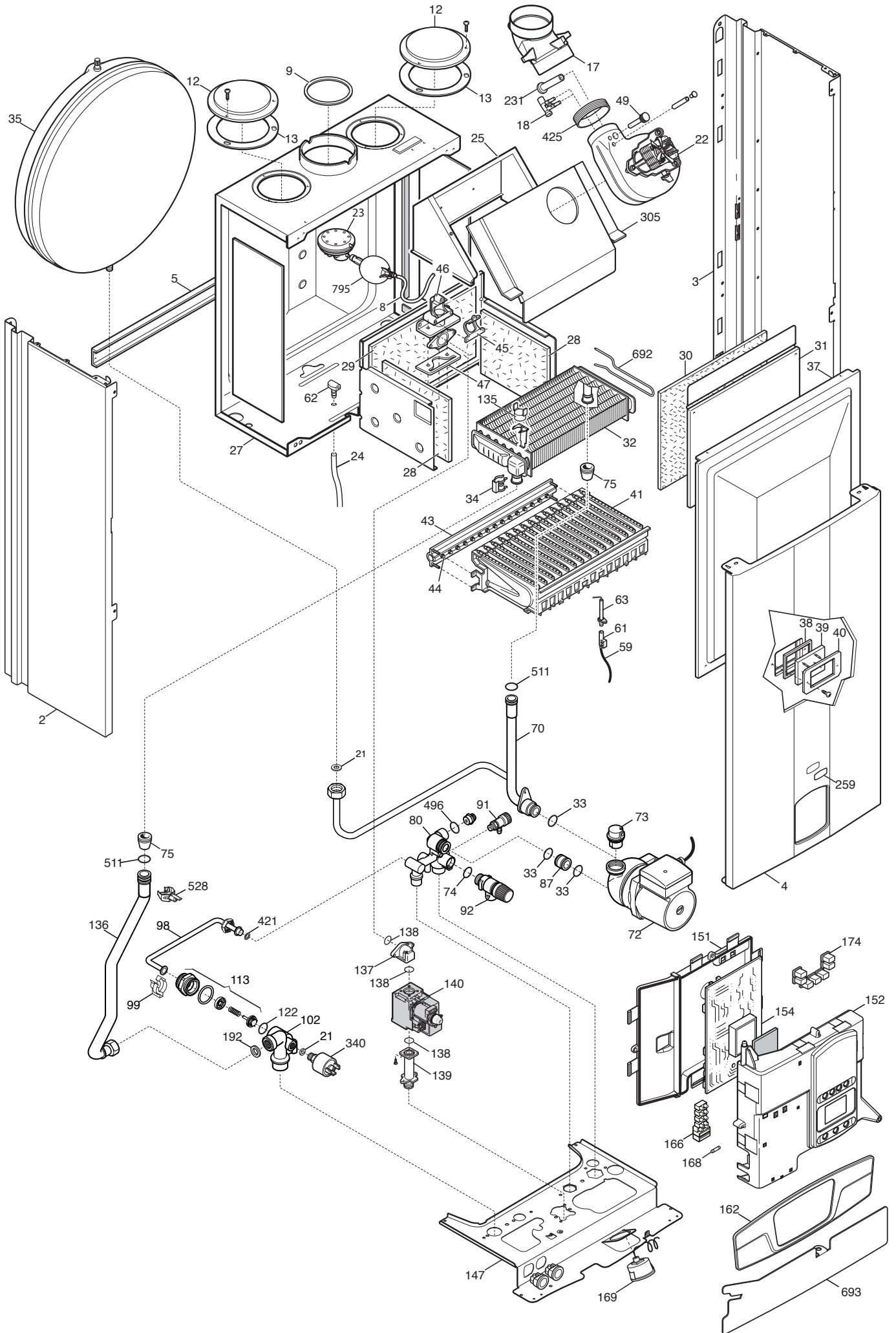
SPARE PARTS CATALOGUE

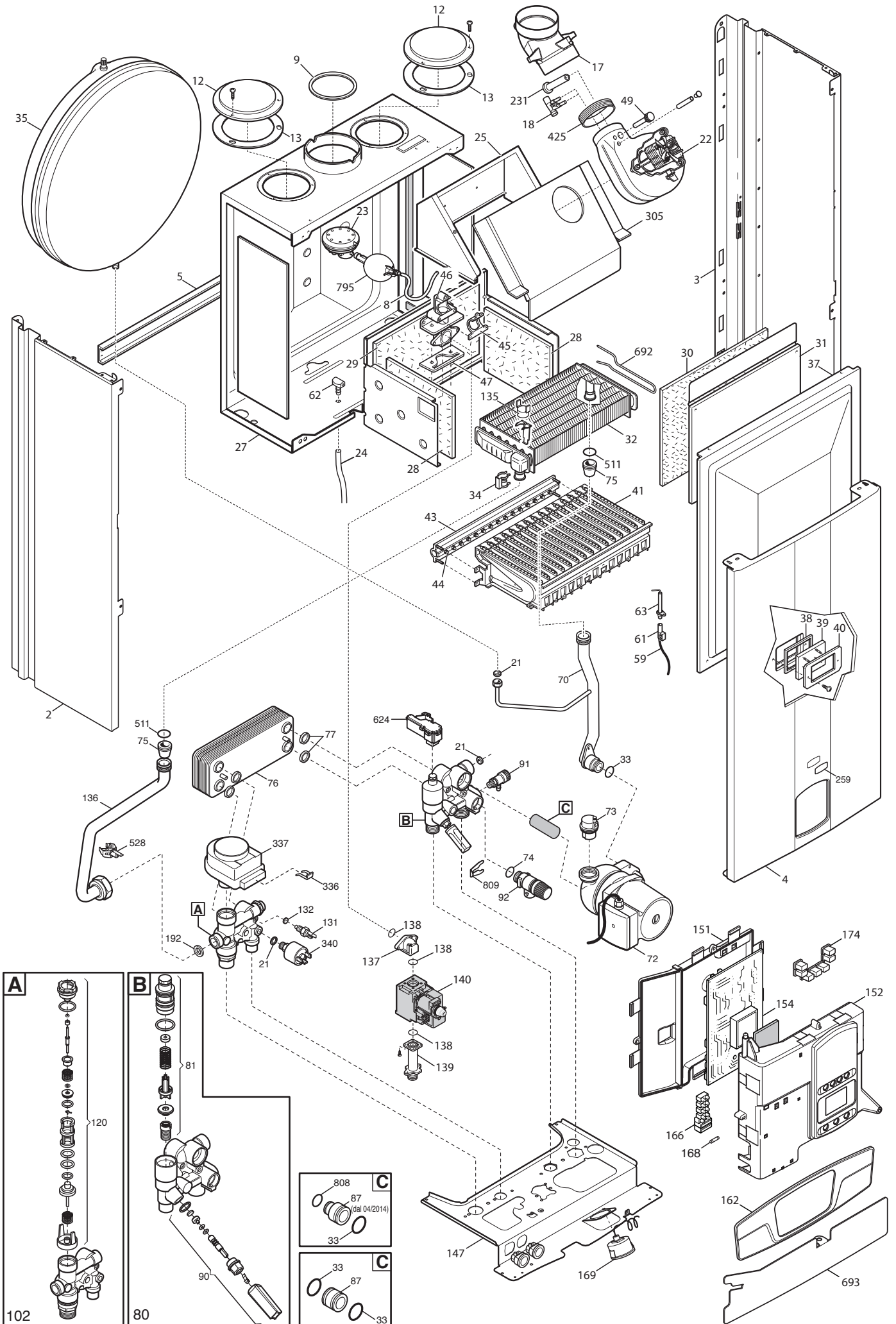
- June 2017 -

BOILER CODE	BOILER DESCRIPTION	EXPLODED REF.
CODICE CALDAIA	DESCRIZIONE CALDAIA	RIF. ESPLOSO
CODIGO CALDERA	DESCRIPCION CALDERA	REF. EXPLOSIONADO
CODE CHAUDIÈRE	DESCRIPTION CHAUDIÈRE	RÉF. EXPLOSÉE
CSE461143541/2	ECOFOUR 1.14	Tab 382
CSE465143542/3	ECOFOUR 1.14 F	Tab 433
CSE461243541/2/3	ECOFOUR 1.24	Tab 382
CSE465243542/3/4	ECOFOUR 1.24 F	Tab 433
CSE462243542/3/4	ECOFOUR 24	Tab 383
CSE466243543/4/5	ECOFOUR 24 F	Tab 434









Pos	Code	Description code	CSE46243543/4/5 24 F CSE46243542/3/4 24 CSE465243542/3/4 1,24 F CSE461243541/2/3 1,24 CSE465143542/3 1,14 F CSE461143541/2 1,14							To serial number	From serial number	Intercha ngeable:		
2	5698660	LEFT PANEL ASSEMBLY ECO4 ATM.	•		•		•							
2	5698680	LEFT PANEL ASSEMBLY ECO4 FF		•		•		•						
3	5698650	RIGHT PANEL ASSEMBLY ECO4 ATM.	•		•		•							
3	5698670	RIGHT PANEL ASSEMBLY ECO4 FF		•		•		•						
4	628820	FRONTAL PANEL ASS. ECO4 ATM	•	•	•	•	•	•						
5	5117420	TRAVERSE SIDES CONNECTION FF		•		•		•						
5	5117460	TRAVERSE SIDES CONNECTION-ATM-	•		•		•							
8	5408080	PRESSURE SWITCH PIPE L=270		•		•		•						
9	5117740	FLUE RESTRICTOR D.78		•		•		•						
12	5108690	PLATE BLANKING		•		•		•						
13	5407400	SUCTION CAP GASKET		•		•		•						
17	5214290	BEND FLUE EMISSIONS ECO4		•		•		•						
18	5413850	PRESS.SENS.VENTURI SINGLE TAP				•		•						
18	710364700	PRESSURE SENSING VENTURI		•										
21	5402050	WASHER-SEALING	•	•	•	•	•	•						
22	5678500	FAN 31W		•										
22	5682150	FAN				•		•						
23	628610	PRESS.SWITCH ASS. 0,68mbar HONEYW				•		•						
23	628630	PRESS.SWITCH ASS. 0.4mbar HONEYW.		•										
23	711277100	FLUE PRESS. SWITCH 50-39Pa HUBA		•										
23	721890300	FLUE PRESS.SWITCH 70-60Pa HUBA				•		•						
24	5414320	PIPE-VALVE COMPENS.4,5x8 L=170		•		•		•						
25	5113800	CONVEYOR ASSEMBLY		•		•		•						
27	5677210	COMBUSTION CHAMBER ASSEMBLY			•		•							
27	5677940	COMBUSTION CHAMBER ASS. 14KW	•											
27	5700020	COMB.CHAMBER ASS.ECO4 FF		•		•		•						
28	5213210	INSULATING PANEL		•		•		•						
28	5213220	INSULATING PANEL	•		•		•							
29	5213280	INSULATING PANEL	•	•	•	•	•	•						
30	5213370	INSULATING PANEL		•		•		•						
30	5213380	FRONTAL INSULATING PANEL	•		•		•							
31	612970	COMB. CHAMBER FRONTAL PANEL		•		•		•						
31	615370	COMBUST.CHAMBER FRONTAL PANEL	•		•		•							
32	5677660	PRIMARY EXCHANGER WITH CLIPS	•	•	•	•	•	•						
33	710963000	OR 21,5X3 EP70 TFL	•	•	•	•	•	•						
34	5113650	PRIMARY EXCHANGER FIXING CLIP	•	•	•	•	•	•						
35	5693900	RECT.EXPANSION VESSEL 6I-CIMM-	•		•		•							
35	5693920	CIRC.EXPANS.VESSEL 6I CIMM		•		•		•						

Pos	Code	Description code	CSE46243543/4/5 24 F CSE462243542/3/4 24 CSE465243542/3/4 1,24 F CSE461243541/2/3 1,24 CSE465143542/3 1,14 F CSE461143541/2 1,14						To serial number	From serial number	Intercha ngeable:
37	5663830	SEALED CHAMBER FRONT PANEL		•	•	•					
38	5401610	VIEWING WINDOW GASKET		•	•	•					
39	5203930	VIEWING WINDOW		•	•	•					
40	5103360	SURROUND - VIEWING WINDOW		•	•	•					
41	5663710	BURNER ASSEMBLY (13 ELEM.)			•	•	•	•			
41	5665980	BURNER ASSEMBLY PERFORMA 12e	•	•							
43	5665960	GAS RAMP 10 HOLES d.1,18	•	•							
43	5698690	GAS RAMP 13HOLES/INJECT. d1,18			•		•				
43	5698700	GAS RAMP 13HOLES/INJECT. d1,28				•		•			
44	5666400	NATURAL GAS INJECTORS KIT				•		•			
44	5669460	NATURAL GAS INJECTORS KIT	•	•	•		•				
44	5680020	TRANSFORMATION KIT G31	•	•	•	•	•	•			
45	5407940	GASKET-BURNER MANIFOLD	•	•	•	•	•	•			
46	5657180	ADAPTOR-MANIFOLD	•	•	•	•	•	•			
47	5407810	GASKET-MANIFOLD ADAPTOR		•		•		•			
49	5409520	HOSE ADAPTER CAP		•		•		•			
59	710430800	IGNITION CABLE L=250 RESIST.	•	•	•	•	•	•			
61	5407830	INSULATION BOOT - ELECTRODE	•	•	•	•	•	•			
62	5409570	SEALED CHAMBER HOSE ADAPTER		•		•		•			
63	8422570	ELECTRODE - IGNITION	•	•	•	•	•	•			
70	5676860	PIPE ASS.(PUMP/EXCHANGER)ECO3		•		•		•			
70	5677270	PIPE ASS. (PUMP/EXCHANGER)	•		•		•				
72	722275900	PUMP 1 SPEED NO CE	•	•	•	•	•	•			
73	607290	AUTOMATIC AIR VENT	•	•	•	•	•	•			
74	5406360	O-RING 14X1,78 EP	•	•	•	•	•	•			
75	5404670	GROMMET - PIPE ASSEMBLY		•		•		•			
76	711612600	DHW PLATE EXCHANGER 10 PLATES					•	•			
77	711613500	DHW PLATE EXCHANGER OR					•	•			
80	5655650	HYDRAULIC INLET ASSY	•	•	•	•					
80	711608300	HYDRAULIC INLET GROUP					•	•			
81	620340	FILTER-TRASDUC GROUP -100078-					•	•			
87	631680	PUMP CONNECTING ELEMENT/OR	•	•	•	•					
87	711652300	PUMP CONNECTING ELEMENT/OR					•	•			
90	620890	FILLING GR.WITH TURBINE 120074					•	•			
91	5652030	DRAINING TAP	•	•	•	•	•	•			
92	9951170	SAFETY VALVE 3 BAR	•	•	•	•					
92	710109400	HYDRAULIC SAFETY VALVE 3 BAR					•	•			
98	5676330	BY-PASS PIPE ASSY-SYSTEM	•	•	•	•					
99	8380850	FIXING CLIP	•	•	•	•					
102	5677030	HEATING/BY PASS ASS. 15.0479	•	•	•	•					
102	711606000	3 WAY VALVE ASS.					•	•			
113	617100	BY-PASS GR.	•	•	•	•					

Pos	Code	Description code	CSE461143541/2 1.14	CSE465143542/3 1.14 F	CSE461243541/2/3 1.24	CSE465243542/3/4 1.24 F	CSE462243542/3/4 24	CSE466243543/4/5 24 F	To serial number	From serial number	Intercha ngeable:
120	711356900	3 WAY VALVE CARTRIDGE						•			
122	5405370	O-RING	•	•	•	•					
131	8435400	NTC SENSOR					•	•			
132	5402830	WASHER - SENSOR SEALING					•	•			
135	9951610	LIMIT THERMOSTAT 105°C	•	•	•	•	•	•			
136	5676870	PIPE ASS.(3 WAY VALVE/EXCHANG)		•		•		•			
136	5677260	PIPE ASSEMBLY (3 WAY VALVE/EX)	•		•		•				
137	5214270	GAS V. ELBOW OUTLET OPEN FLUE	•		•		•				
137	5214280	GAS VALVE ELBOW OUTLET FF		•		•		•			
138	5402010	O RING 22.22x2.62	•	•	•	•	•	•			
139	5206620	CONNECTOR-GAS VALVE INLET	•	•	•	•	•	•			
140	5653610	GAS VALVE - SIGMA 845048	•	•	•	•	•	•			
140	5665220	GAS VALVE HON.	•	•	•	•	•	•			
147	5693850	CONNECTION TRAVERSE ECO4	•	•	•	•		•			
151	631660	CONTROL PANEL COVER ECO4	•	•	•	•	•	•			
152	5698880	CONTROL PANEL ECO4 BAXI	•	•	•	•	•	•			
154	5702450	PCB GROUP BERT&PART HDIMS 02	•	•	•	•	•	•			
154	710825300	PCB SM11469	•	•	•	•	•	•	1607		
162	5702560	PANEL PLATE ECOFOUR BAXI	•	•	•	•	•	•			
166	5688430	TERM.BOARD/DOUBLE FUSE HOLDER	•	•	•	•	•	•			
168	9950580	FUSE		•		•		•			
169	9951650	MANOMETER D.40	•	•	•	•	•	•			
174	5414010	KEYBOARD ECO4 BAXI	•	•	•	•	•	•			
192	5404650	SEALING WASHER G 3/4	•	•	•	•	•	•			
231	5409480	FLUE INTAKE		•		•		•			
241	5668420	CONVEYOR ASSEMBLY			•		•				
241	5678060	FLUE CHAMBER ASSEMBLY 14KW	•								
242	606930	FLUE SAFETY THERMOSTAT 60C	•								
242	616160	FLUE SAFETY THERMOSTAT 70ø			•		•				
259	5681120	BRAND BAXI LUNA3	•	•	•	•	•	•			
305	5113810	EVACUATION SMOKE CHIMNEY		•		•		•			
336	8380680	CLIP-RETAINING						•			
337	5694580	3 WAY VALVE MOTOR						•			
340	9951690	PRESSURE SWITCH	•	•	•	•	•	•			
421	5408270	O-RING 11,91 X 2,62 NBR	•	•	•	•					
425	5412270	GASKET FAN		•		•		•			
496	400020	O-RING	•	•	•	•					
511	5404600	O.R. 17,86x2,62	•	•	•	•	•	•			
528	8435500	NTC SENSOR D18-ITS2410201/0-	•	•	•	•	•	•			
624	8435380	FLOW RILEVATOR						•			
692	5114360	PRIMARY EXCHANGER CLIPS	•	•	•	•	•	•			
693	5117440	PRINTED CNTR. PANEL PROTECTION		•							

