

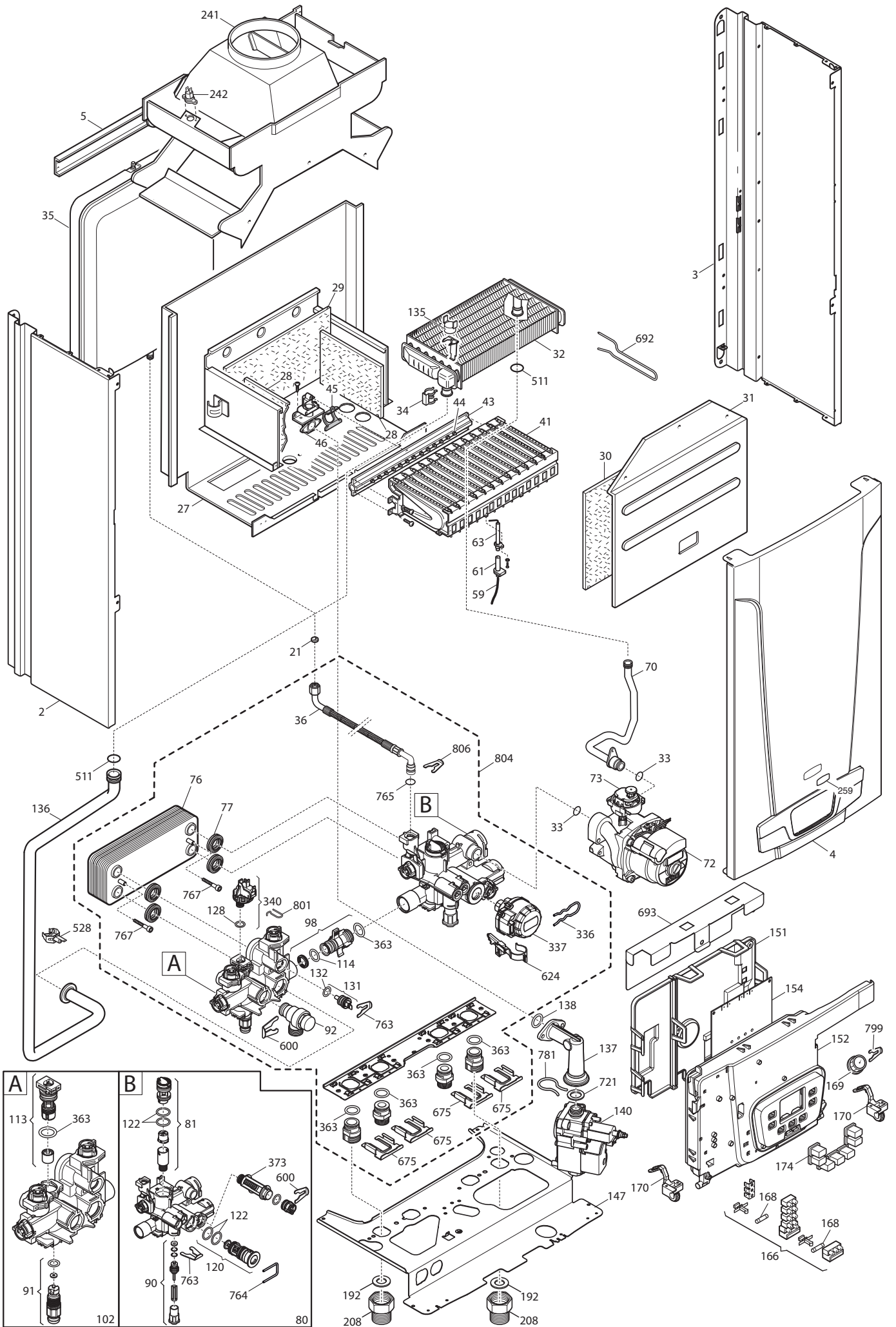
# BAXI

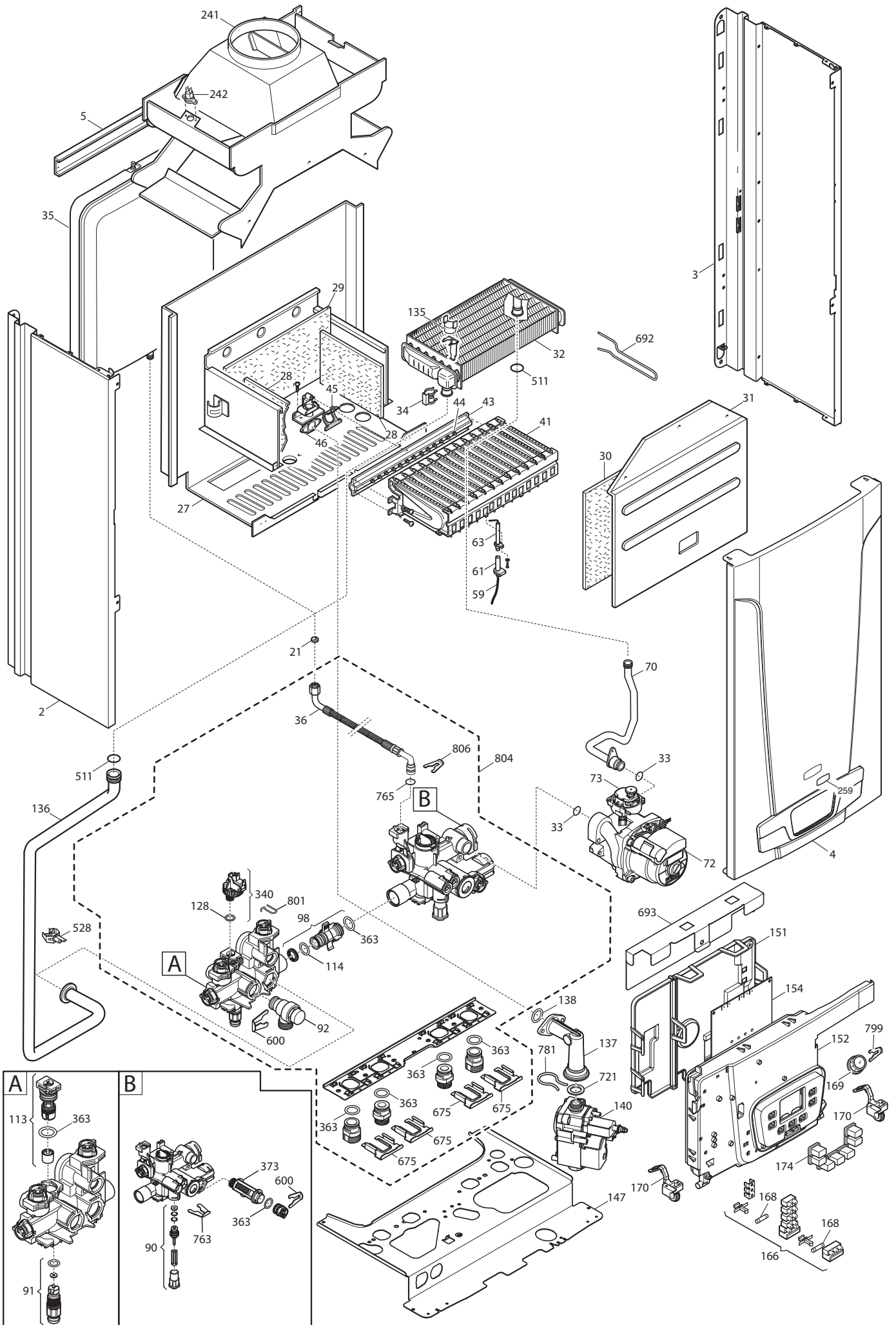


## Eco5 Compact + SPARE PARTS CATALOGUE

- June 2016 -

<b>BOILER CODE</b>	<b>BOILER DESCRIPTION</b>	<b>EXPLODED REF.</b>
<b>CODICE CALDAIA</b>	<b>DESCRIZIONE CALDAIA</b>	<b>RIF. ESPLOSO</b>
<b>CODIGO CALDERA</b>	<b>DESCRIPCION CALDERA</b>	<b>REF. EXPLOSIONADO</b>
<b>CODE CHAUDIÈRE</b>	<b>DESCRIPTION CHAUDIÈRE</b>	<b>RÉF. EXPLOSÉE</b>
722529101	ECO5 COMPACT+ 1.24/120L	Tab 532
721746401	ECO5 COMPACT+ 1.24/80L	Tab 532
721746501	ECO5 COMPACT+ 24	Tab 531





# Eco5 Compact +

22/06/2016

Pos	Code	Description code				To serial number	From serial number	Intercha ngeable:
			721746401 1.24/80L	722529101 1.24/120L	721746501 24			
2	5698660	LEFT PANEL ASSEMBLY ECO4 ATM.	•	•	•			
3	5698650	RIGHT PANEL ASSEMBLY ECO4 ATM.	•	•	•			
4	722393800	FRONTAL PANEL ECO5 COMPACT ATM	•	•	•			
5	5117460	TRAVERSE SIDES CONNECTION-ATM-	•	•	•			
21	5402050	WASHER-SEALING	•	•	•			
27	5698630	COMBUST. CHAMBER ASS. ECO4 ATM	•	•	•			
28	5213220	INSULATING PANEL	•	•	•			
29	5213280	INSULATING PANEL	•	•	•			
30	5213380	FRONTAL INSULATING PANEL	•	•	•			
31	615370	COMBUST.CHAMBER FRONTAL PANEL	•	•	•			
32	5677660	PRIMARY EXCHANGER WITH CLIPS	•	•	•			
33	710963000	OR 21,5X3 EP70 TFL	•	•	•			
34	5113650	PRIMARY EXCHANGER FIXING CLIP	•	•	•			
35	5693900	RECT.EXPANSION VESSEL 6I-CIMM-	•	•	•			
36	5698830	PIPE EXPANSION VESSEL	•	•	•			
41	5663710	BURNER ASSEMBLY (13 ELEM.)	•	•	•			
43	5698690	GAS RAMP 13HOLES/INJECT. d1,18	•	•	•			
44	5680020	TRANSFORMATION KIT G31	•	•	•			
45	5407940	GASKET-BURNER MANIFOLD	•	•	•			
46	5657180	ADAPTOR-MANIFOLD	•	•	•			
59	721426600	IGNITION CABLE	•	•	•			
61	5407830	INSULATION BOOT - ELECTRODE	•	•	•			
63	8422570	ELECTRODE - IGNITION	•	•	•			
70	5698720	PIPE PUMP/EXCHANGER ATM BITRON	•	•	•			
72	722185500	PUMP UMP 15-60 6M WITH CABLE	•	•	•			
73	7219215	AIR VENT PUMP WI.	•	•	•			
73	710493600	AIR VENT PUMP GR.	•	•	•			
76	5686660	DHW PLATE EXCHANGER 10 PLATES			•			
77	5404520	DHW PLATE EXCHANGER GASKET			•			
80	711033700	COMBI HYDROBLOCK RETURN BIT. ECO			•			
81	710048100	DHW CARTRIDGE			•			
90	710046600	FILLING TAP ASSY	•	•	•			
91	710045500	DISCHARGE TAP CONNECTION	•	•	•			
92	710071200	SAFETY VALVE 3 bar NOVASFER	•	•	•			
98	710046300	BY-PASS CONNECTION ASSY	•	•	•			
102	711033600	COMBI HYDROBLOCK DELIVERY BIT. EC			•			
113	710048300	BY-PASS CARTRIDGE	•	•	•			
114	710046400	O-RING d.15,54X2,62	•	•	•			
120	721403800	3WV CARTRIDGE			•			
122	710047800	O-RING d.23,47X2,62			•			
128	710048800	O-RING d.8,9X1,9	•	•	•			
131	721309400	NTC SENSOR NICKEL			•			

# Eco5 Compact +

22/06/2016

Pos	Code	Description code				To serial number	From serial number	Intercha ngeable:
			721746501 24	722529101 1.24/120L	721746401 1.24/80L			
132	710049100	O-RING d.11,91X2,62 OR115						
135	9951610	LIMIT THERMOSTAT 105°C	•	•	•			
136	5698740	PIPE EXCH./H.INLET ECO4 ATM	•	•	•			
137	721345600	GAS VALVE CONNECTING ELEMENT	•	•	•			
138	710733100	O RING 22.22x2.62	•	•	•			
140	710660400	GAS VALVE VK4105M	•	•	•			
147	711457300	CONNECTION TRAVERSE	•	•	•			
151	710654600	BOX COVER	•	•	•			
152	711454800	CONTROL PANEL	•	•	•			
154	721824700	PCB HON. ECO5/MAIN5	•	•	•	1620		
154	766077600	PCB HON. ECO5/MAIN5	•	•	•		1621	YES
166	5688430	TERM.BOARD/DOUBLE FUSE HOLDER	•	•	•			
168	9950580	FUSE	•	•	•			
169	710673600	MANOMETER D.28	•	•	•			
170	711457500	CONTROL PANEL SUPPORT	•	•	•			
174	710830500	KEYBOARD MAIN5/ECO5	•	•	•			
192	5404650	SEALING WASHER G 3/4	•	•	•			
208	710635700	CONNECTING ELEMENT M/F G3/4	•	•	•			
241	5668420	CONVEYOR ASSEMBLY	•	•	•			
242	616160	FLUE SAFETY THERMOSTAT 70ø	•	•	•			
259	710419300	BRAND BAXI	•	•	•			
336	710047400	CLIP - 3WV MOTOR HEAD						
337	710047300	3WV MOTOR HEAD						
340	721384000	ON/OFF CH PRESSURE SWITCH	•	•	•			
363	710045300	O-RING d.17,96X2,62	•	•	•			
373	710047100	CH FILTER	•	•	•			
511	711230600	OR 17,13X2,62 EP70 TFL	•	•	•			
528	710702400	NTC SENSOR D18	•	•	•			
600	710045400	CLIP FLAT d.18	•	•	•			
624	710976600	HALL SENSOR ASSY						
675	710046100	CLIP BRASS ADAPTOR	•	•	•			
692	5114360	PRIMARY EXCHANGER CLIPS	•	•	•			
693	710783700	PRINTED CNTR. PANEL PROTECTION	•	•	•			
721	710660300	OR d.19,3X3,6 HNBR	•	•	•			
763	710046700	CLIP FLAT d.12	•	•	•			
764	710047500	CLIP U d.3						
765	710045700	O-RING d.9,19 X 2,62	•	•	•			
767	710046900	PTP EXCH FIXING SCREW						
781	710539600	CLIP GAS PIPE	•	•	•			
799	710654100	SPRING FIXING D.9	•	•	•			
801	710048700	CLIP CH PRESSURE SWITCH	•	•	•			
804	5698760	HYDRAULIC GROUP COMBI BITRON						
804	5699200	HYDRAULIC GROUP ONLY HEATING	•	•				

# Eco5 Compact +

22/06/2016

Pos	Code	Description code					To serial number	From serial number	Intercha ngeable:
			721746501 24	722529101 1.24/120L	721746401 1.24/80L				
806	5117880	CLIP d.10 BITRON	•	•	•				
999	8414620	POWER CABLE	•	•	•				
999	8419040	CABLE - EARTH	•	•	•				
999	710501600	CABLE DHW SENSOR			•				
999	710794400	LOW POWER CABLE 7P ECO5			•				
999	710794500	3 WAY VALVE CABLE ECO5			•				
999	711285800	LOW POWER CABLE 7P ECO5 MONO	•	•					
999	711285900	3 WAY VALVE CABLE ECO5 MONO	•	•					
999	721426400	LOW VOLTAGE WIRING 12P	•	•	•				
999	721426500	GAS VALVE WIRING ECO5 ATM	•	•	•				
999	721748100	HIGH VOLTAGE WIRING ATM WI.	•	•	•				
999	721904100	HIGH VOLTAGE WIRING ATM GR.	•	•	•				

